



Your Global Solution for
shopping cart, buggy and
trolley casters & wheels





What is the Colson Group?

- Local service worldwide with more manufacturing and distribution locations than any other manufacturer
- State-of-the-art manufacturing and testing equipment to assure consistent quality
- Your worldwide caster technology leader with more than 40 design engineers on staff to develop the perfect caster for any application
- The most complete line of casters in the world with capacities ranging from 40 lbs to 100,000 lbs each
- One stop shopping for all your worldwide caster needs to simplify your business
- The highest value for your money

Pemco Project Green

Millions and millions of shopping cart wheels are unnecessarily sent to landfills every year. Pemco offers recycle programs that are environmentally friendly.



KasterKat®



- The premium "Red Ring" wheel
- Industry standard for years
- Proven quality in the harshest retail environments
- Polyurethane tread is chemically bonded and mechanically locked between the tread and polypropylene core
- Smoothest rolling surface, with additional shock absorbing features not found in competitor's wheels.
- Non-marking and floor protective
- Resistant to most chemicals, solvents, acids and oils
- Single spindle, sealed double raceway bearings cannot become misaligned with use
- Insert molded bearings are rust resistant and sealed on both sides after being pre-lubricated with high-quality grease.
- Limited warranty that guards wheels against failure or wear out, beyond a reasonably serviceable condition for the life of your portable product

Specifications

Bolted Axle Caster Model: 77679E
Wheel Model: 83119E

Wheel Dia.	Tread Width	Capacity	Load Height
5"	1-1/4"	250 lbs	5-7/8"

Standard threaded fitting 1/2"-13x1" long. Wheel bearing bore is 5/16". Riveted models are available, consult factory.

PolyKat®



- Industry standard for years
- Precision-molded polyurethane tread, mechanically locked to a polypropylene core
- Non-marking and floor protective
- Resistant to most chemicals, solvents, acids and oils
- Single spindle, sealed double raceway bearings cannot become misaligned with use
- Insert molded bearings are rust resistant and sealed on both sides after being pre-lubricated with high-quality grease
- Limited warranty that guards wheels against failure or wear out, beyond a reasonably serviceable condition for the life of your portable product

Specifications

Wheel Dia.	Tread Width	Capacity	Load Height
------------	-------------	----------	-------------

Caster Model: 79042E
Wheel Model: 83169E

4"	1"	165 lbs	4-15/16"
----	----	---------	----------

Caster Model: 77602E
Wheel Model: 83120E

4"	1-1/4"	250 lbs	4-15/16"
----	--------	---------	----------

Caster Model: 77520E
Wheel Model: 83122E

5"	1-1/4"	250 lbs	5-7/8"
----	--------	---------	--------

Optional Grey Black Model
Caster Model: 77688Y
Wheel Model: 83195Y

5"	1-1/4"	250 lbs	5-7/8"
----	--------	---------	--------

Standard threaded fitting 1/2"-13x1" long. Wheel bearing bore is 5/16". Riveted models are available, consult factory.

Tensioner



Tensioner

- Pemco's standard tensioner wheel reduces damage caused by rolling, unattended shopping carts
- Designed to hold unattended shopping carts on a slight slope (1-2 degrees) and slow down acceleration on greater slopes

Adjustable Tensioner

- Deceleration is pre-set at the factory for average conditions
- Parking lot conditions vary widely -- the amount of deceleration can easily be field adjusted to meet customer needs
- Patent 4,318,204 & 5,002,163

Specifications

Tensioner Models

PolyKat Wheels

Caster Model: 77662E

Wheel Model: 83190E

KasterKat Wheels

Caster Model: 77695E

Wheel Model: 83207E

Adjustable Tensioner Models

PolyKat Wheels

Caster Model: 77692E

Wheel Model: 83202E

Wheel Dia.	Tread Width	Capacity	Load Height
5"	1-1/4"	250 lbs	5-7/8"

Standard threaded fitting 1/2"-13x1" long. Wheel bearing bore is 5/16". Riveted models are available, consult factory.

Anti-Static



- Shoppers don't want to be zapped with static electricity ... here's the solution
- Every rotation of the wheel discharges static electricity
- No more chains or straps to become entangled or break
- Synthetic resin conductor in wheel is impregnated with electrically conductive material that is connected to the caster and ultimately the shopping cart
- Features PolyKat wheel tread core and bearing design
- Limited warranty that guards wheels against failure or wear out, beyond a reasonably serviceable condition for the life of your portable product



Specifications

Caster Model: 77639E

Wheel Model: 83184E

Wheel Dia.	Tread Width	Capacity	Load Height
5"	1-1/4"	250 lbs	5-7/8"

Standard threaded fitting 1/2"-13x1" long. Wheel bearing bore is 5/16". Riveted models are available, consult factory.

Fusion



- The fusion of anti-static and tensioner wheel for the ultimate in shopper comfort and protection
- No field adjustment necessary
- Patent 7,464,797
- Features PolyKat wheel tread core and bearing design
- Limited Warranty that guards wheels against failure or wear out, beyond a reasonably serviceable condition for the life of your portable product

Specifications

Bolted Axle Caster Model: 77699E

Wheel Model: 83206E

Wheel Dia.	Tread Width	Capacity	Load Height
5"	1-1/4"	250 lbs	5-7/8"

Standard threaded fitting 1/2"-13x1" long. Wheel bearing bore is 5/16".

Walkalator



- Strong construction, core in Nylon and tread in Polyurethane
- Double ball bearings
- Independent movement of each disc, allowing easy maneuverability.
- Fits most of escalator standards
- Available in 5" diameter

Specifications

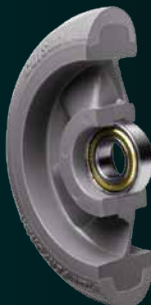
R.512.EPU.E

Wheel Dia.	Tread Width	Capacity	Bore ID
5"	1-1/4"	100Kg	5/16

Performa®



- Round tread design for outstanding maneuverability
- Quiet like soft rubber reducing shopping cart noise and vibration to a minimum
- Highly efficient rolling wheel. Rolls like hard rubber
- Customized thread-guards to match your store's colors
- Will protect and not mark your floor
- Option of conductive wheels to prevent static build-up and discharge



Specifications

4" R.412.PER.E, 5" R.512.PER.E

Wheel Dia.	Tread Width	Capacity	Bore ID
4"	1-1/4"	90Kg	5/16
5"	1-1/4"	100Kg	5/16

Options



- TPR black/gray wheel models available on all PolyKat models



- New hollow rivet precision swivel caster option available on all models
- This caster will reduce the occurrence of flutter or shimmy commonly found on many of today's shopping carts.



- Optional PemCoat™ finish prolongs castor fork life in the worst conditions

Shopper



- Proven market leader.
- Established use in various operating environments.
- Sealed Ball bearing headwork delivers high range manoeuvrability.
- Non-marking and floor protective.
- Zinc plated with lacquer coating to give extended life against corrosion resistance.
- Resistant to chemicals, solvents, acids and oils.
- Low noise emissions.
- Shock absorbing tyre to reduce vibration.
- Total stop brake option for Child safety.
- Fully compliant with BS EN 1929.
- Rubber tyre is mechanically locked to the wheel centre to prevent becoming detached in use.
- Profiled Rubber tyre to provide lower rolling resistance.
- Anti-static and colour options available.

Specifications

Wheel Dia.	Tread Width	Capacity	Load Height
125mm	30mm	80Kg	152mm

Available with 10mm or 12mm bolt fixing options.

Mallmaster



- Proven market leader.
- Established use in various operating environments.
- Independent twin wheels to aid swivel action of castor.
- Sealed Ball bearing fitting into both outer wheels to decrease rolling resistance.
- Fits all known types of Automated walkways & Travelators.
- Sealed Ball bearing headwork delivers high range manoeuvrability.
- Non-marking and floor protective.
- Resistant to chemicals, solvents, acids and oils.
- Patented design.
- Cost effective alternative for trolley loss prevention.
- Sealed Ball bearing headwork eliminates head rock and ingress of foreign objects.
- Compatible with a number of security devices.
- Standard overall height.
- Fully compliant with BS EN 1929.

Specifications

Wheel Dia.	Capacity	Load Height
100mm	50Kg	129mm
125mm	65Kg	152mm

Available with 10mm or 12mm bolt fixing options.

Backroom / Platform Cart Casters

FEATURES:

- Excellent for heavy duty retail carts, backroom carts, flatbed carts and platform trucks
- Zinc finish
- Hardened double ball bearing raceways
- Standard 1/2" diameter axle with locknut
- Two year limited warranty
- Three year limited warranty on Premium PolyKat™ models

OPTIONS:



Verti-Lock tread brake specify VLK



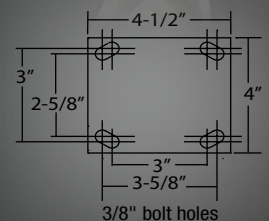
Posi-Lok tread brake specify PSK



Optional PemCoat™ finish prolongs caster fork life in the worst conditions



Top Plate Specifications:



Specifications

Wheel Dia.	Tread Width	Wheel Type	Bearing Type	Capacity	Load Height	Swivel Radius	Approx. Weight	Swivel Model	Rigid Model
4"	2"	TPR QuietKat™ Flat	Roller	350 lbs	5-5/8"	3-5/8"	6-1/2 lbs	77727Y	78814Y
		Premium Polyurethane PolyKat™ Grey	Roller	700 lbs	5-5/8"	3-5/8"	6-1/2 lbs	77750Y	78840Y
5"	2"	TPR QuietKat™ Flat	Roller	375 lbs	6-1/2"	4-1/8"	7 lbs	77725Y	78815Y
		Mold-On Rubber on Iron	Roller	400 lbs	6-1/2"	4-1/8"	7 lbs	77718	78807
		Standard Polyurethane Grey	Roller	800 lbs	6-1/2"	4-1/8"	7 lbs	77738Y	78830Y
		Premium Polyurethane PolyKat™ Grey*	Roller	800 lbs	6-1/2"	4-1/8"	7 lbs	77701Y	78801Y
6"	2"	Mold-On Rubber	Roller	410 lbs	7-1/2"	4-3/4"	9 lbs	77720	78809
		TPR QuietKat™ Round	Roller	450 lbs	7-1/2"	4-3/4"	8 lbs	77726Y	78816Y
		TPR QuietKat™ Flat	Roller	600 lbs	7-1/2"	4-3/4"	8 lbs	77742Y	78831Y
		Standard Polyurethane Grey	Roller	1000 lbs	7-1/2"	4-3/4"	8 lbs	77732Y	78821Y
		Premium Polyurethane PolyKat™ Grey*	Roller	1000 lbs	7-1/2"	4-3/4"	8 lbs	77700Y	78800Y
8"	2"	Mold-On Rubber	Roller	410 lbs	7-1/2"	4-3/4"	10 lbs	77722	78811
		TPR QuietKat™ Round	Roller	450 lbs	7-1/2"	4-3/4"	8 lbs	77744Y	78833Y
		TPR QuietKat™ Flat	Roller	600 lbs	7-1/2"	4-3/4"	8 lbs	77746Y	78835Y
		Standard Polyurethane Grey	Roller	900 lbs	7-1/2"	4-3/4"	8 lbs	77749Y	78838Y
		Premium Polyurethane PolyKat™ Grey*	Roller	1000 lbs	7-1/2"	4-3/4"	8 lbs	77723Y	78812Y

*Durability testing has shown that Premium PolyKat™ wheels can last up to 3 times longer than standard polyurethane models.

All polyurethane models in chart are grey tread. To order blue tread polyurethane wheels change Y to E. Custom colors available—consult Pemco. Delrin and precision ball bearings available on all models—consult Pemco.



QuietKat™ Round
(Durometer 70A)



QuietKat™ Flat
(Durometer 70A)



Moldon Rubber
(Durometer 75A)



Standard Polyurethane
Blue or Grey
(Durometer 55D)



Premium Polyurethane
PolyKat™ Blue or Grey
(Durometer 55D)



PEMCO

Pemco Casters & Wheels
www.pemcocasters.com
800-968-9631

colson
Incorporating Flexello and British Castors

Colson British Castors
www.colson-castors.co.uk
+44 (0) 121 556 7221

Flexell

colson
Colson Caster Do Brasil

Colson Caster Do Brasil
www.colson.com.br
55-41-3888-7555

colson

Colson Transportwielen B.V.
www.colson-europe.com
+31 (0) 318 536666

Colson Polska
www.colson-europe.com
+48 618 666 762

RHOMBUS



Rhombus Rollen Holding-GmbH
www.rhombus-rollen.com
+49 (0) 2196 870

Rhombus SAS
www.rhombus-rollen.com
+00.33.1.30.95.55.45

Jarvis

Guangzhou Jarvis Caster Ltd.
www.jarvischina.com
86 20 82860111

